

CONTENTS

Digital laser does not work on LED/LCD screen	1
Norwii Presenter software	2
Physical Laser	2
Function of page forward and backward	3
Long press ' < ' or ' > ' cannot full screen or black screen	4
Mouse Cursor	4
Annotate function	5
Not charging	6
Short control distance	7
Functional compatibility	8

Digital laser does not work on LED/LCD screen

This product has both a Digital Laser and a Physical Laser; the Digital Laser can be used on projection screens and LED/LCD screens; the Physical Laser can only be used on projection screens, not LED/LCD screens.

The Digital Laser is a virtual digital pointer, not physical light, and must be used with the Norwii Presenter software (hereafter referred to as the software). The following steps must be completed before use.

1. Run the Norwii Presenter software.
2. Make sure the wireless presenter is connected to the computer. You can check the connection status at the bottom left corner of the software window.
3. When you use it for the first time on macOS computer, please open 'Keyboard Setting Assistant' in 'System Preferences' and set the keyboard type of the USB receiver to 'ANSI'. You can follow the instructions on the official website link:
<https://www.norwii.com/manualen/624-en.html>
4. When you run the software for the first time on macOS, you will be prompted to open the security and privacy permissions required by the software. Please set the following three permissions to Allow: ①Input Monitoring, ②Screen &

System Audio Recording, and ③Accessibility. You can follow the instructions on the following official website link: <https://www.norwii.com/manualen/397-en.html>

Norwii Presenter software

1. Software acquisition

- For the products of USB receiver with USB flash drive, the Norwii Presenter software is pre-stored and ready to run.
- For the products of USB receiver without USB flash drive, please download for free from the official website. Download path:
<https://www.norwii.com/downloaden/list-168-en.html>

2. Software Manual

- Manual of Norwii Presenter software for macOS:
<https://www.norwii.com/manualen/397-en.html>
- Manual of Norwii Presenter software for Windows:
<https://www.norwii.com/manualen/587-en.html>

Physical Laser

1. Physical laser does not light up

- Check that the power switch of the wireless presenter is on.
- Make sure the battery is fully charged. If the battery is low, please charge it first and then try again. When charging, please make sure the charging adapter and cable are normal.

2. Physical laser is on but weak

- Physical lasers can only be used on projection screens or walls, they cannot be used on LED/LCD screens. It is normal for the laser to appear weak when used on such screens.
- A wireless presenter that complies with the Laser Safety Regulations will also have a weak laser when used in an outdoor environment with sufficient lighting, which is also normal.

Other than the above 2 cases, the laser module may be damaged, please contact the seller.

Function of page forward and backward

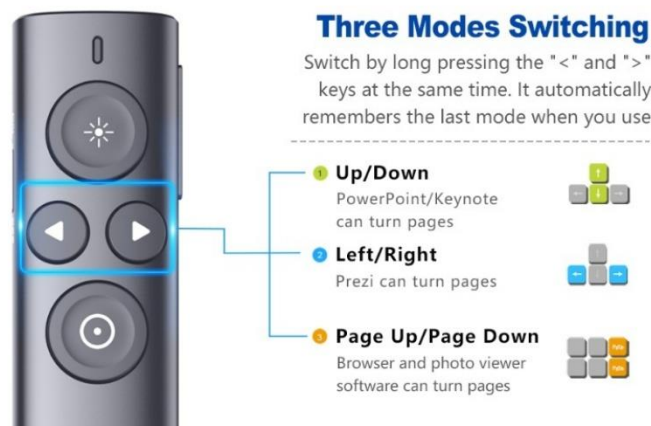
1. Cannot turn pages and laser does not light up

Check that the batteries are charged; check that the power switch of the wireless presenter is turned on.

2. Cannot turn pages, but laser lights up

Please try again after Pairing according to the instruction on below official link:
<https://www.norwii.com/faqcn/501-cn.html>

If the wireless presenter still can't turn the pages after successful pairing, you can switch among the following three modes (some products have four modes) by long-pressing the ' < ' and ' > ' buttons for 3 seconds, depending on the type of presentation software you are using, such as PowerPoint, Keynote, Prezi, or others.



If the problem remains unresolved, contact the seller.

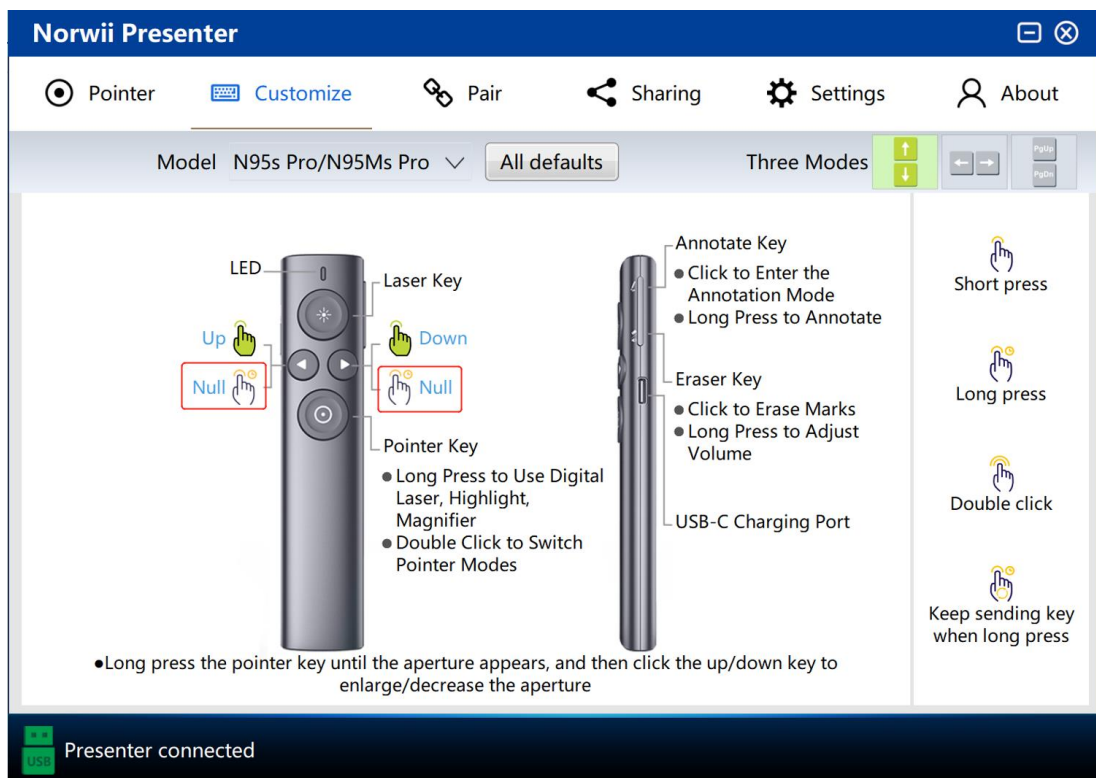
3. Cannot turn the pages, the operating system prompts 'Unrecognized USB device'

- Please try changing the USB port and computer first to rule out the computer problem.
- Please run the Norwii Presenter software and connect to the USB receiver, check the color of the USB icon at the bottom left corner of the software, a red icon indicates that the USB receiver is faulty, please contact the seller.

Long press ' < ' or ' > ' cannot full screen or black screen

Please change the input method to English input mode and try again. In Chinese input mode, long pressing the ' > ' key will display a series of 'bbbbbbbbbbb'.

Tip: Some customers want to disable the long press function of ' < ' and ' > ' key to prevent misuse. You can run Norwii Presenter software and click 'Customize' tab, set the long press function of ' < ' and ' > ' key to 'Null'.



Mouse Cursor

1. Mouse cursor drift

The following two cases of cursor drift require calibration.

- The wireless presenter does not move, but the cursor moves by itself in a certain direction up to the edge of the screen.
- When the product is moved horizontally or vertically, the cursor does not move horizontally or vertically but moves diagonally in a certain direction.

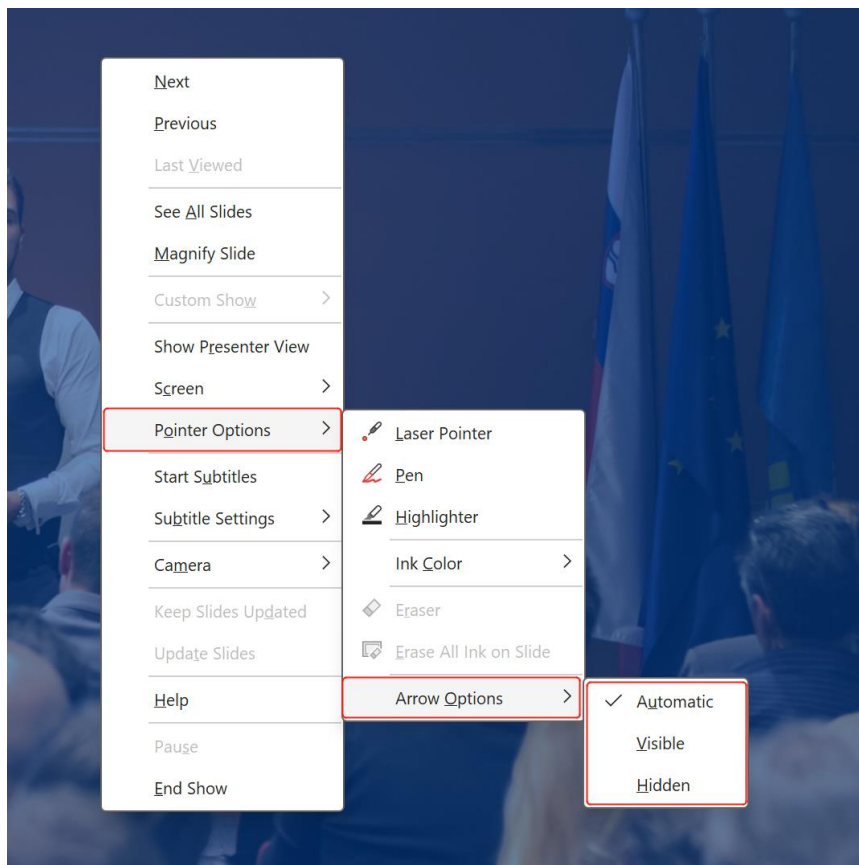
2. Calibration method

Place the wireless presenter on a flat, stable surface. Turn off the power of the wireless presenter, long press the ‘>’ key and turn on the power, then release the ‘>’ key, the indicator LED will start flashing. Keep the wireless presenter stable, the indicator light will stop flashing to indicate that the calibration is complete.

Calibration can be repeated, if not successful, try again.

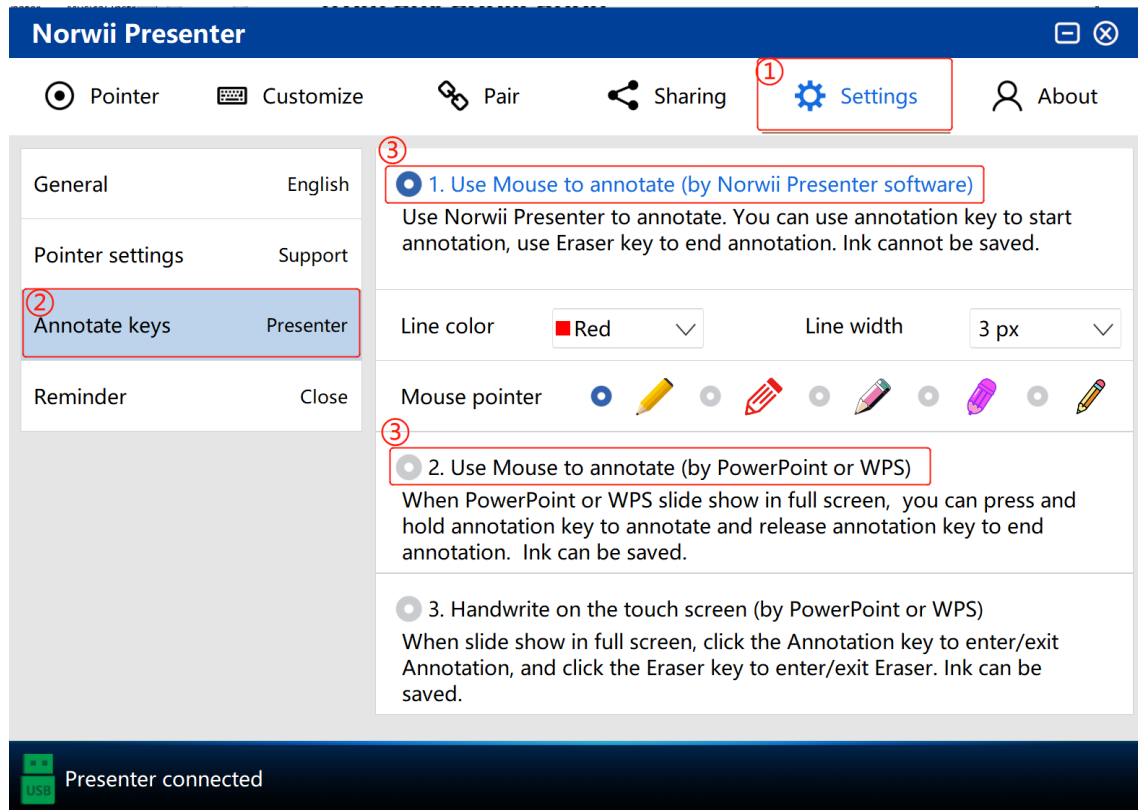
3. In full screen, the mouse pointer stays shown/hidden

In PowerPoint full screen /slide show state, click the right mouse button, in the ‘Pointer Options’ - ‘Arrow Options’ to modify the settings.



Annotate function

1. This product has two types of annotate function, see the following figure.



- As shown in the above figure, the first is to use Norwii Presenter to annotate. You can use annotation key to start annotation, use Eraser key to end annotation. Ink cannot be saved.
- As shown in the above figure, the second is to use mouse to annotate. This way is limited to PowerPoint and WPS software. When PowerPoint or WPS slide shows in full screen, you can press and hold the annotation key to annotate and release annotation key to end annotation. Ink can be saved to file.

You can use this method with PowerPoint 2007 and higher, in which the software itself has annotation feature. Early versions of Office, WPS and macOS systems do not support the second way.

2. Display a string of 'eeeeeee' when deleting an annotation.

Please change your computer's input method to English mode.

Not charging

To charge, use a charging cable with USB-A on one end and USB-C on the other end. Some presenters do not support charging with USB-C charging cables at both ends.



Short control distance

Communication between the wireless presenter and the USB Receiver is via 2.4GHz wireless signals, which may affect the control distance if there is an obstruction between them. If there are strong Wi-Fi, Bluetooth or other 2.4GHz wireless signals in the environment, it may also affect the control distance. It is normal for the actual control distance to be shorter than the advertised distance due to different usage environments, but if the control distance is very short, e.g. less than 5 meters, please contact the seller.

Functional compatibility

Norwii Compatibility Guide

The test results show the compatibility of the default button functions of the product with popular operating systems and commonly used software.

If the test result shows some function is not available(x), Customer can change the key function definition through customization by by Norwii Presenter APP to make it available.

Norwii Presenter APP only support windows 7 and macOS 10.15 or later.

Digital Pointer Series	Operation System→		Windows 7 and above					Mac OS		Android 4.4 and above		iOS(Test by iPad)			Linux (Ubuntu 18.04)
	Function of the Presenter	Corresponding keyboard function	MS Office ^[4]	WPS	Open office	Prezi	Keynote	MS Office 365	Prezi	WPS	MS office	Keynote	WPS	MS Office	LibreOffice 6
Run Norwii Presenter App	Page Up	Page Up	√	√	√	√	√	√	√	√	√	X	X	X	√
	Page Down	Page Down	√	√	√	√	√	√	√	√	√	X	X	X	√
	Arrow Up	Arrow Up	√	√	√	√ ^[2]	√	√	√ ^[2]	√	√	√	√	√	√
	Arrow Down	Arrow Down	√	√	√	√ ^[2]	√	√	√ ^[2]	√	√	√	√	√	√
	Arrow Left	Arrow Left	√	√	√	√	√	√	√	√	√	√	√	√	√
	Arrow Right	Arrow Right	√	√	√	√	√	√	√	√	√	√	√	√	√
	Full Screen ^[5]	Shift+F5..... ^[1]	√	√	√	X ^[3]	√	√	X ^[3]	X	X	√	X	X	√
	Escape Full Screen	ESC	√	√	√	√	√	√	√	√	√	√	√	√	√
	Black Screen	b	√	√	√	√	√	√	√	X	√	√	√	√	√
	Annotation	Ctrl + P	√	√	X	X	X	X ^[6]	X	X	√	X	X	X	X
	Eraser	e	√	√	X	X	X	NA ^[6]	X	X	√	X	X	X	X
	Mouse Enable	Mouse Move	√	√	√	√	√	√	√	√	√	X	X	X	√
	Mouse Left	Mouse LeftClick	√	√	√	√	√	√	√	X	X	X	X	X	√
	Mouse Right	Mouse RightClick	√	√	√	√	√	√	√	√	√	X	X	X	√
	Volume Control	Vol up/down	√	√	√	√	√	√	√	√	√	√	√	√	√
	Virtual Laser ^[7]	Ctrl+L	√	X	X	X	X	X	X	X	X	X	X	X	X
	Black Screen ^[8]	/	√	√	√	√	√	√	√	Not Support.					
	Mark ^[8]	/	√	√	√	√	√	√	√						
	Eraser ^[8]	/	√	√	√	√	√	√	√						
	Highlight ^[8]	/	√	√	√	√	√	√	√						
	Magnifier ^[8]	/	√	√	√	√	√	√	√						
	Digital Laser ^[8]	/	√	√	√	√	√	√	√						

Annotation:

[1] The default shortcut keys to start full-screen slide show are a series of shortcut keys, not just Shift + F5 for PowerPoint for Windows. The reason why a series of shortcut keys are sent is to be compatible with multiple presentation software at the same time. In macOS, the shortcut key for PowerPoint to start slide show from the current slide is Command + Return.

[2] To forward and backward pages in Prezi, you need to switch to Page Up and Page Down modes or Arrow Left and Arrow Right modes by press the page up key and page down key at the same time. The Arrow Up and Arrow Down mode corresponds to the smart zoom-in and smart zoom-out functions in Prezi.

[3] There is no shortcut key for Prezi to start slide show. The only way to start slide show in Prezi is to click slide show button with the mouse.

[4] We have tested Microsoft PowerPoint from Microsoft Office 2003.

[5] Includes N28's one-click to start slide show and other wireless presenter's long press page up key to start slide show.

[6] Due to shortcut keys conflict in macOS system, , Norwii presenter does not support one-click to start Pen.

[7] "Virtual Laser " is to use the "Laser Pointer" function of Microsoft PowerPoint. Only Microsoft Office 2010 or later support the "Laser Pointer" function. After start slide show, right click, select Pointer Options – Laser Pointe from right-click popup menu. The shortcut key is Ctrl + P.

[8] Prefix 'APP' indicates that this function is supported by Norwii Presenter APP.